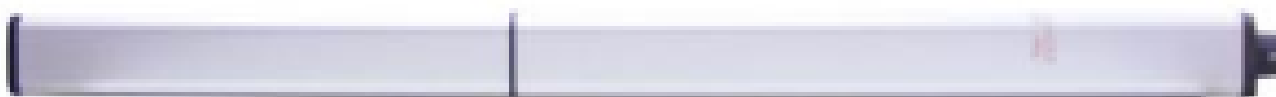


## Product

Extremely sturdy and reliable hydraulic operators for industrial and condominium use. They can automate swing gate leaves up to 7m wide and weighing up to 500kg. Smooth, silent gate movements are guaranteed by the extremely high-performance hydraulic system and the closing slowdown. Maximum precision in traction and thrust force control is guaranteed by the by-pass valve system.

Code		
P935061 00001	P4,5	Reversible hydraulic operator for swing gates up to 4.5 m. 500 kg in weight. Cycle time 28+slowdown sec. Useful travel 390 mm. max angle 123 °.
P935061 00004	P4,5 WINTER	Reversible hydraulic operator for swing gates up to 4.5 m. 500 kg in weight. Cycle time 28+slowdown sec. Useful travel 390 mm. max angle 123 °.
P935060 00001	P7	Reversible hydraulic operator for swing gates up to 7 m. 500 kg in weight. Cycle time 42+slowdown sec. Useful travel 390 mm. max angle 123 °.
P935060 00004	P7 WINTER	Reversible hydraulic operator for swing gates up to 7 m. 500 kg in weight. Cycle time 42+slowdown sec. Useful travel 390 mm. max angle 123 °.



## PLUS



The rear articulated brackets and jointed rod make installation simple and reliable in all situations.



The brass release knob, protected with a personal key, facilitates the manual opening of the gate in the event of a power cut.



The closing slowdown guarantees silent, smooth movements on even the biggest gates. Also, the adjustment screw makes it possible to adapt the slowdown intensity to needs of each situation.

## RIGEL 5

### Universal control panel for one or two 230V operators - 600+600W



#### RIGEL 5 D113693 00003

Application: universal control panel for one or two operators  
 Board power supply: 230V single-phase  
 Operators power supply: 230V single-phase 600+600W  
 Main features: removable terminal blocks, programming and diagnostics with display, incorporated dual channel receiver, plug-in connector for additional receiver, electric snap latch or magnetic lock connection, electronic torque limiter, electronic slowdown during opening and closing, separate limit switch inputs for each motor, possibility of traffic-light management and hydraulic operator pre-heating with SSR5 board  
 Main functions: automatic re-closing, separate motor working times, stays locked when closed, water hammer, 2/3/4 step logic, partial opening, fast closing, separate opening and closing  
 Compatibility: RIGEL 4

## Technical features

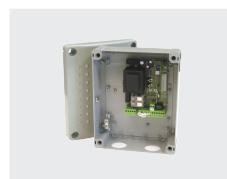
	P4,5	P4,5 WINTER P7 WINTER
Control unit	ALCOR N, RIGEL5	
Motor power supply	230 V	230 V
Power input	250 W	250 W
Maximum angle	123 °	123 °
Slowdown	during closing	during closing
Impact reaction	hydraulic clutch	hydraulic clutch
Locking	solenoid lock	solenoid lock
Frequency of use	very intensive	very intensive
Release	reversible	reversible
Environmental conditions	from -10 °C to 60 °C	from -30 °C to 60 °C
Protection rating	IP55	

## ACCESSORIES



#### ME - D111013

Control board for 12Vac solenoid lock for 230V automation systems



#### ALPHA SD - D113680 00002

Universal control panel for a 230V/500W single phase operator



#### ALCOR N - D113706 00002

Control panel for one or two 230V/300W operators for swing gates



#### RADIUS B LTA 230 R1 - D113748 00002

Flashing light with incorporated antenna for motors with power supply 230 V. Flashing beacon with built-in antenna for 230V motors



#### RADIUS B LTA 230 R2 - D113749 00002

Flashing light without incorporated antenna for motors with power supply 230 V. Flashing beacon without built-in antenna for 230V motors



#### ECB DX - D121016

Right-hand horizontal solenoid lock, 12-24V

(800) 878-7829